

Comic Strip Map Skills

Name _____
WG__

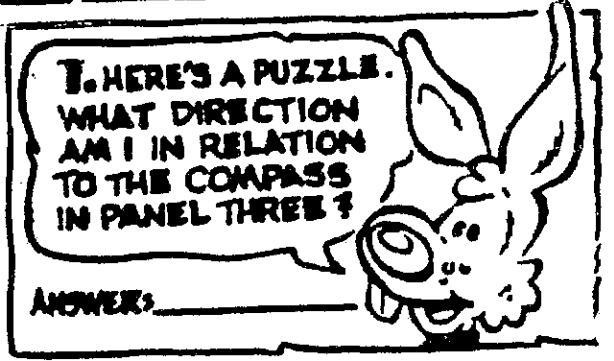
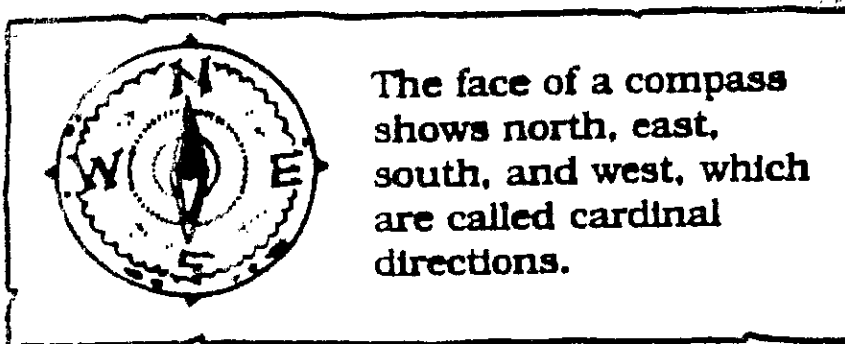
- | | | |
|----------------|---------------------------|----------|
| 1. Page 5 | All Turned Around | 1. _____ |
| 2. Page 6 | Where There's Smoke | 2. _____ |
| 3. Pages 7-8 | Food for Thought | 3. _____ |
| 4. Pages 9-10 | Wrong Side of the Tracks | 4. _____ |
| 5. Page 16 | Monkey Business | 5. _____ |
| 6. Page 19 | Out of Sight; Out of Mind | 6. _____ |
| 7. Pages 22-23 | X Marks the Spot | 7. _____ |
| 8. Page 24 | Birds of a Feather | 8. _____ |
| 9. Pages 25-26 | Measure for Measure | 9. _____ |

SKILL

Name: _____

Cardinal
Directions

ALL TURNED AROUND featuring Jackrabbit Jim and Monkey Mike



2. Find Monkey Mike in the first panel. In what direction is he in relation to the compass in panel three?

3. If Jackrabbit Jim were facing north, what direction would be to his left?

4. If Jackrabbit Jim were facing east, what direction would be to his right?

5. Monkey Mike scurried west to go back to his tree, but remembered that he had forgotten his bananas at Jackrabbit Jim's. He turned around to go get his bananas. What direction was he facing when he turned around?

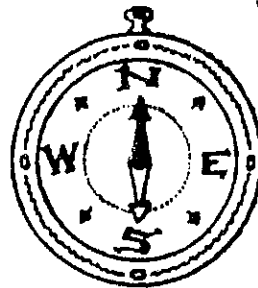
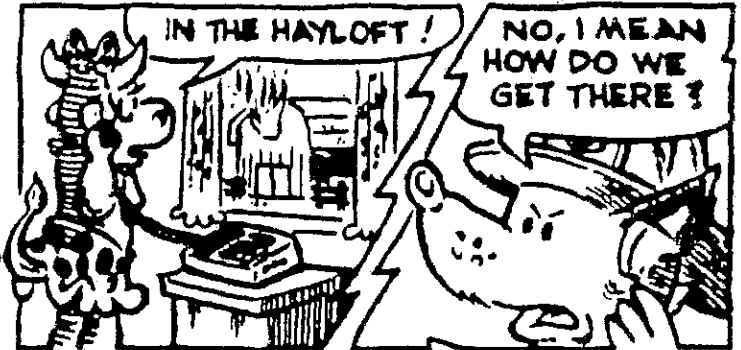
6. Monkey Mike is facing west and Jackrabbit Jim is on his right. What direction would Monkey Mike have to turn to face Jackrabbit Jim?

7. Jackrabbit Jim is facing south and his home in the briar patch is directly behind him. Which way would Jim have to hop to get home?

8. Here's a tough one. Monkey Mike was facing north. He turned directly around, then turned to his left, and then turned directly around again. Which direction did he end up facing?

WRAP IT UP! In what direction does your desk face?

WHERE THERE'S SMOKE, THERE'S FIRE featuring Fireman Fox and Cowbella



1. Intermediate directions fall between cardinal directions. The direction between south and east is "southeast." What is the direction between south and west?

2. If the firehouse is located southeast of Cowbella's barn, in which direction would Fireman Fox have to travel to put out the fire?

6. Cowbella ran in a northwest direction out of her barn to escape the fire. When she turned around to look at her barn, in which direction was she facing?

3. What is the direction between north and east called?

7. Fireman Fox faced northwest as he sprayed the fire hose into the hayloft. His fire truck was directly to his left. In which direction was his fire truck in relation to where he was standing?

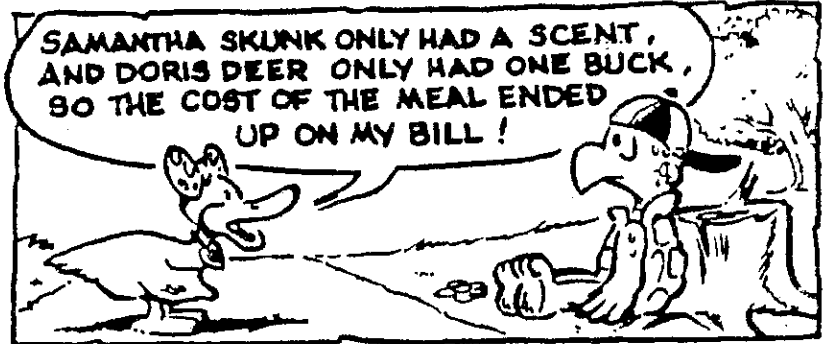
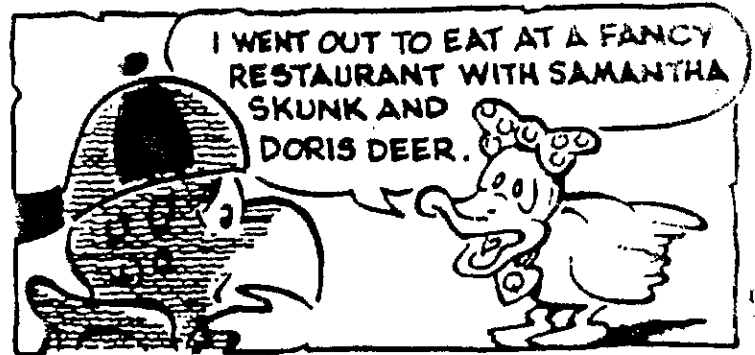
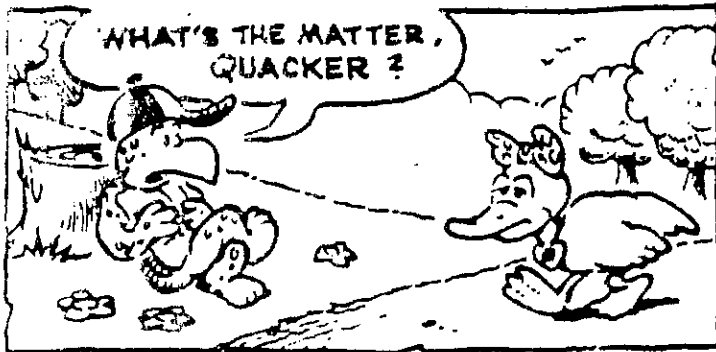
4. What direction is Fireman Fox in the first panel of the comic strip in relation to the illustration of the compass?

8. Fireman Fox was facing southeast. What direction was to his right?

5. Cowbella was facing southwest as she thanked Fireman Fox for putting out the fire. If Fireman Fox was looking directly at Cowbella, in which direction was he facing?

WRAP IT UP! Northeast, northwest, southeast, and southwest are called intermediate directions. What are north, east, south, and west called?

FOOD FOR THOUGHT featuring Topsy-Turtle and Quacker



Use the "Food for Thought" map to answer the following questions.

1. After eating at Creature Comforts, Doris Deer went home. She headed north for three traffic circles, southeast for one circle, and then northeast toward her forest. Trace her path with a blue marker. What is the name of her forest?

2. From the restaurant, Samantha Skunk headed southwest to one traffic circle, south to the next circle, and then southwest until she came to the next circle. She lives on the western edge of this circle. Trace her path with a green marker and place a dot where she lives.

Fireman Fox left the firehouse to eat lunch at Creature Comforts. In which direction did he have to travel?

4. Quacker decided to leave a visual message for her husband by dropping rose petals along her path. Put red dots along this path. She left the restaurant heading northeast. At the first traffic circle she headed east, then turned southeast at the first circle. At the next circle she headed southwest. After crossing the first bridge she headed northwest. At the third circle she headed northeast to the next circle. She then headed east to the next circle where she turned southeast, back to the restaurant. What was the visual message she left?

5. How many bridges did Quacker cross on her journey?

WRAP IT UP! Write directions for a path on the map. Have a friend trace it.

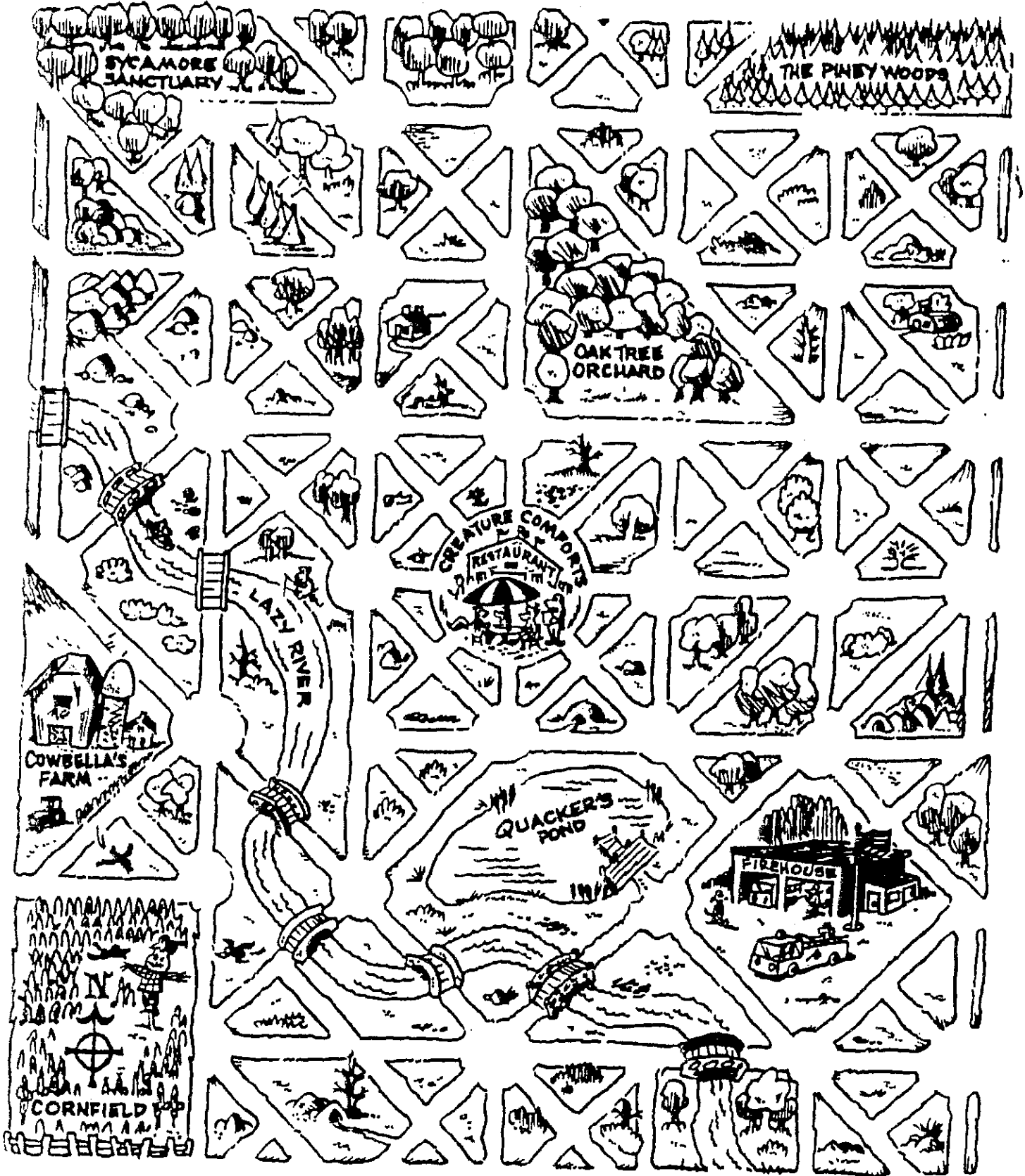
SKILL

Name: _____

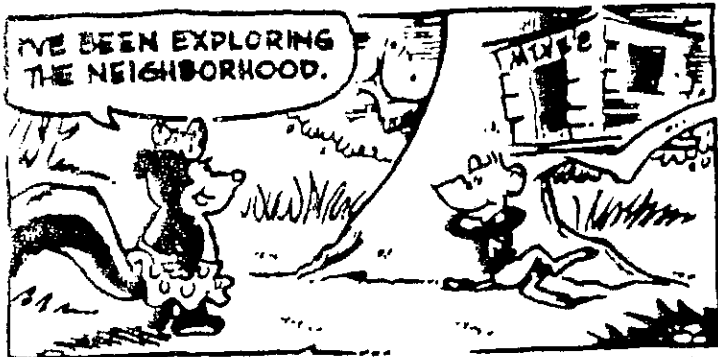
.....
Intermediate
Directions

FOOD FOR THOUGHT: Neighborhood Map

A "traffic circle" is a circular or semi-circular area where several roads come together.



WRONG SIDE OF THE TRACKS featuring Samantha Skunk and Monkey Mike



If you want to be more precise, intermediate directions can be broken down into even smaller increments. North-northeast (NNE) is halfway between north and northeast. East-northeast (ENE) is halfway between east and northeast. The cardinal direction is always mentioned first. Label these two directions on the "Wrong Side of the Tracks" activity sheet.

Use the "Wrong Side of the Tracks" activity sheet to answer the following questions.

1. Monkey Mike ran in the opposite direction of the tiger tracks. Label the abbreviation of this direction on the compass, and draw a picture of Monkey Mike.
2. In which direction is Monkey Mike's tree house? Write the complete direction below and label it on the compass.

3. Topsy-Turtle's log is located halfway between the firehouse and Jackrabbit Jim's. In which direction is it? Write the direction below. Label it on the compass and draw a picture of his log.

In which direction is Samantha Skunk's cave?

5. If you wanted to go swimming in Quacker's Pond, in which direction would you have to travel? Write the complete direction below and label it on the compass.

6. Samantha Skunk's schoolhouse is located to the west-southwest. Draw her schoolhouse on the activity sheet and label the abbreviation on the compass.
7. If you completed this page carefully, only one direction has not been written on the compass. Write it below and label it on the compass.

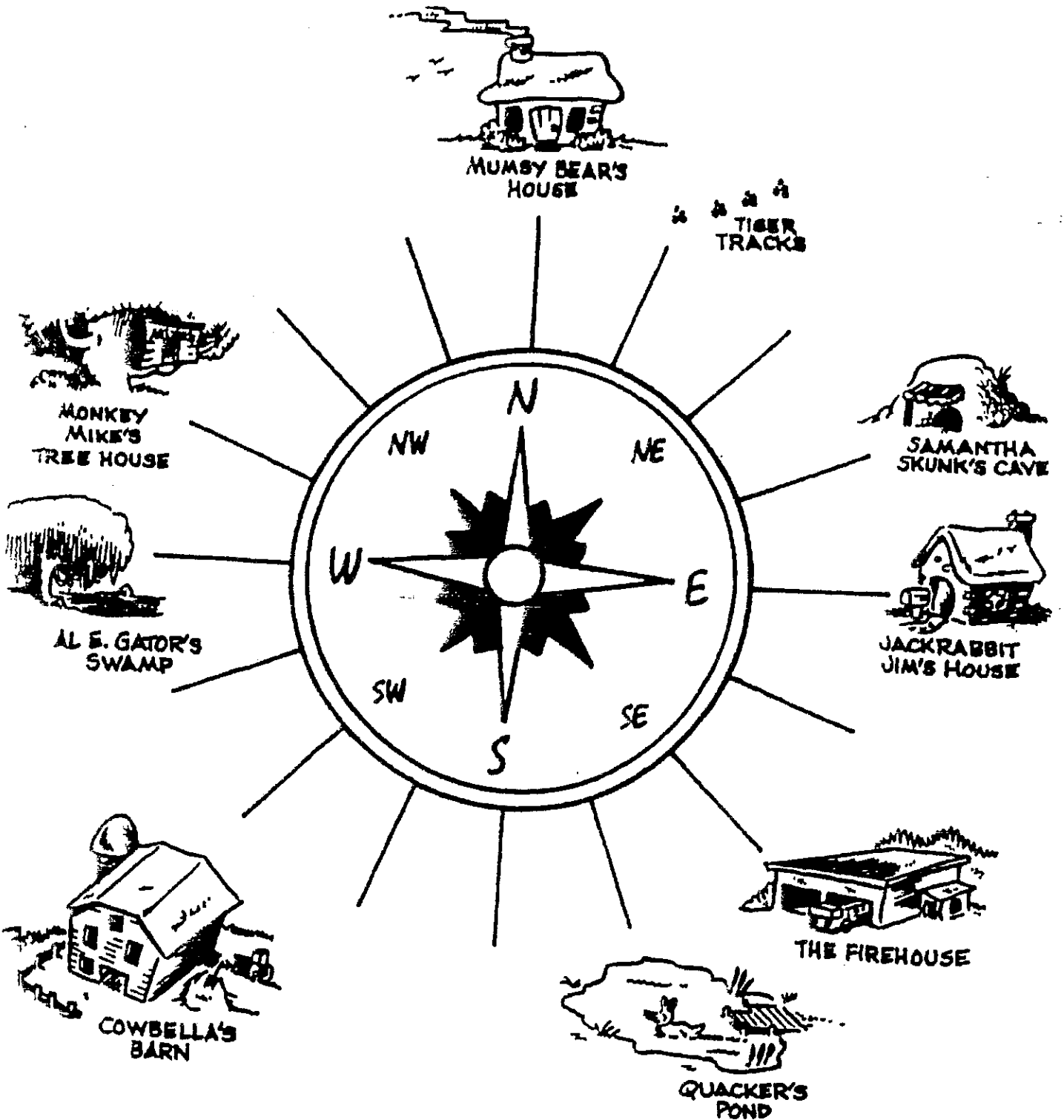
WRAP IT UP! Assume that the seats in your classroom all face north. Create a blank compass, label the cardinal and intermediate directions, and draw icons of one or two objects that are located in each of the directions around you.

SKILL

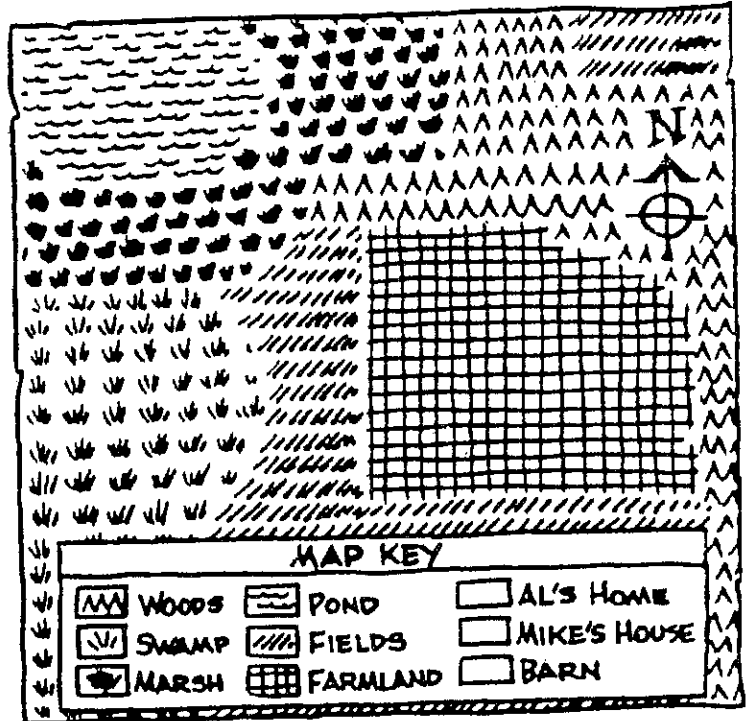
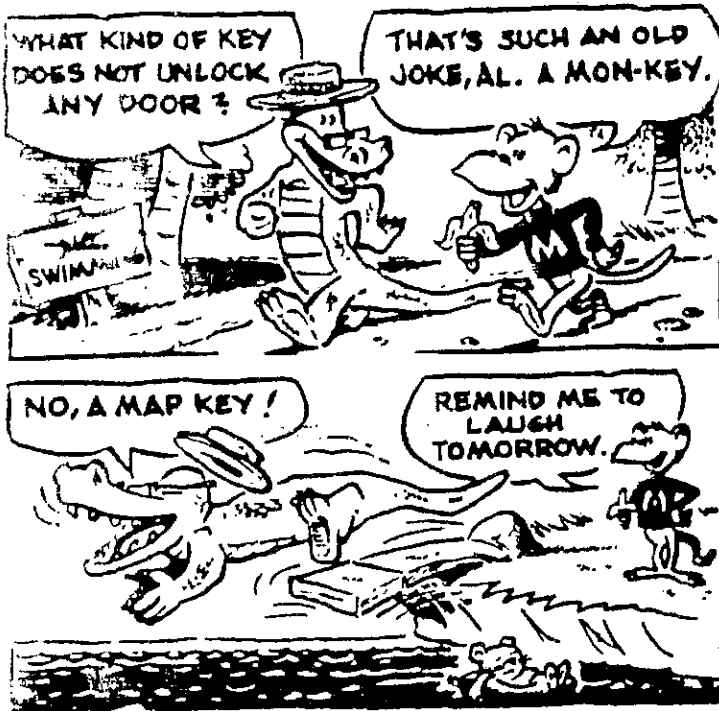
Name: _____

.....
Intermediate
Directions

WRONG SIDE OF THE TRACKS: Compass Activity



MONKEY BUSINESS featuring Al E. Gator and Monkey Mike



On most maps, a box called a key or legend explains all the symbols used. The symbols are usually simple and remind us of the features they represent. A key allows map makers to give plenty of information in a small amount of space.

1. What type of feature can be found in the northwest corner of the map?

2. Color this feature and its corresponding symbol in the key blue.
3. What type of feature forms most of the eastern border of the map?

4. Color this feature and its corresponding symbol in the key green.
5. What type of feature can be found in the south-central section of the map?

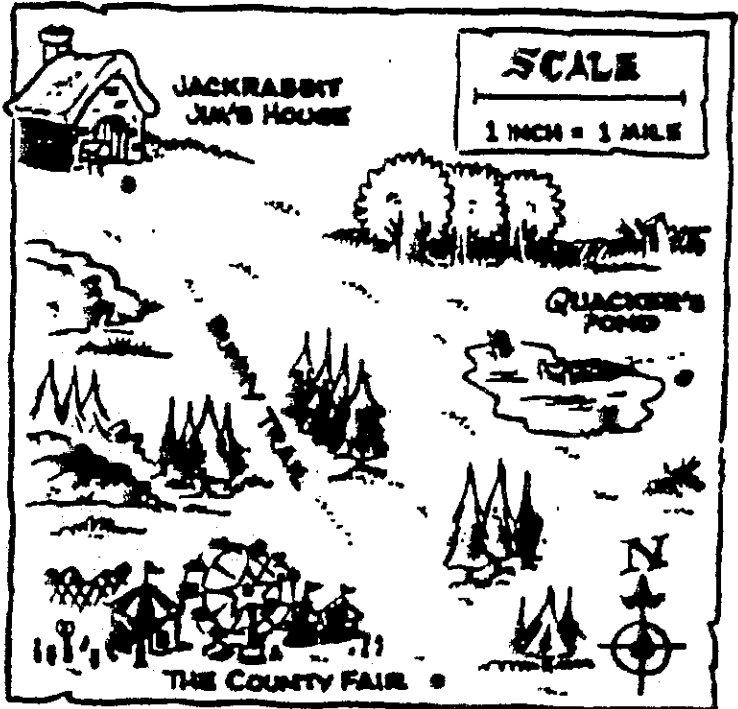
6. Select different colors to shade the other four landscape features and their corresponding symbols.
7. Al E. Gator lives in the northeast part of the swamp. Create an icon that represents Al's home and add it to both the key and the map.
8. Monkey Mike's tree house is located in the woods near the southeast corner of the marsh. Create an icon that represents Mike's home and add it to both the key and the map.
9. Cowbella's barn is located in the south-southwest section of the farmland. Create an icon that represents the barn and add it to both the key and the map.

WRAP IT UP! Create and color a map key that includes simple symbols representing the following features: mountains, hills, deserts, plains, beaches, and waterfalls.

SKILL
 Reading Scale:
 Direct Distances

Name: _____

OUT OF SIGHT, OUT OF MIND featuring Jackrabbit Jim and Quacker



How far is it from Jackrabbit Jim's house to Quacker's Pond?

Jackrabbit Jim and Quacker met each other halfway between their homes before heading to the County Fair. (Put a black dot at the halfway point where they met.) How far did they have to travel from the halfway point to the fair?

The next day, Jackrabbit Jim took the bunny trail directly to the County Fair and then returned home. How far did he hop?

According to the scale, what distance is equal to one-half inch?

5. How much farther is the County Fair from Jackrabbit Jim's house than from Quacker's Pond?

6. Quacker went to the County Fair and then visited Jackrabbit Jim's house before returning to her pond. How far did she waddle that day?

7. If a map's scale shows that one inch is equal to a distance of two miles, what distance would eleven inches equal?

WRAP IT UP! In which intermediate direction does Jackrabbit Jim live in relation to Quacker's Pond? In which direction does Quacker need to go to get to the County Fair?

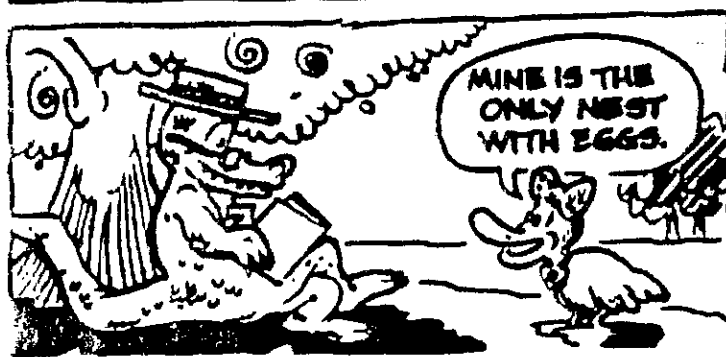
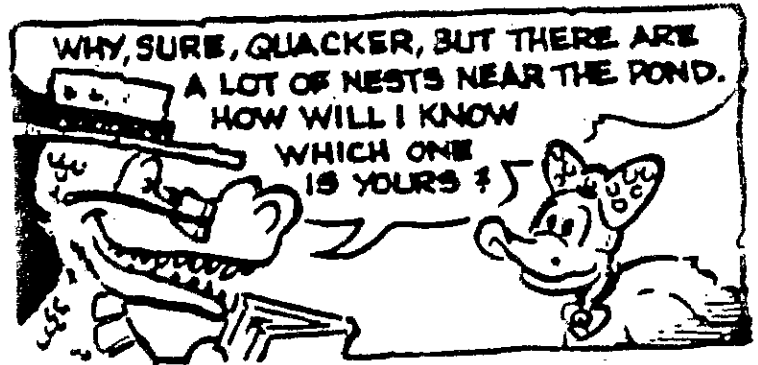
SKILL

Name: _____

Scale:

Direct Distances

X MARKS THE SPOT featuring Quacker and Al E. Gator



Use the "X Marks the Spot" treasure map to answer the following questions.

1. A clue leading to a treasure chest tells you to go from the edge of Bottomless Pit to Rattlesnake Desert. How many paces is it to go directly from one point to the other?

2. Oh, no! You can't cross Whirlpool Lagoon. Approximately how many paces would it be to go from Bottomless Pit to Rattlesnake Desert by using the path that goes up and around Razor Rock Falls?

3. You find a clue to the hidden treasure in Rattlesnake Desert. It reads, "Start at the gate of pirates bold at the grave from long ago; riches are yours of silver and gold; you don't have far to go. From the gate go 100 paces NW, 125 paces N, and 125 paces NW." Where are you?

4. How many paces would it be to go directly from the gate at Pirates' Graves to the eye of Tarantula Rock?

5. In the mouth of Tarantula Rock you find a note. It reads, "From my mouth count your steps to the desert of rattlesnakes. Write the number below—it won't be long until this mystery breaks."

6. The note continues, "From the tar pit, walk in a northeast direction half this number of paces. Where are you now?"

7. Here you find the final clue: "Draw a line from Skull Island's mouth to the eye of Tarantula Rock; another from the center of Whirlpool Lagoon to a shipwreck, and X Marks the Spot!" Where is the gold?

SKILL

Name: _____

Reading Scale:

Plot Distances

MARKS THE SPOT: Treasure Map

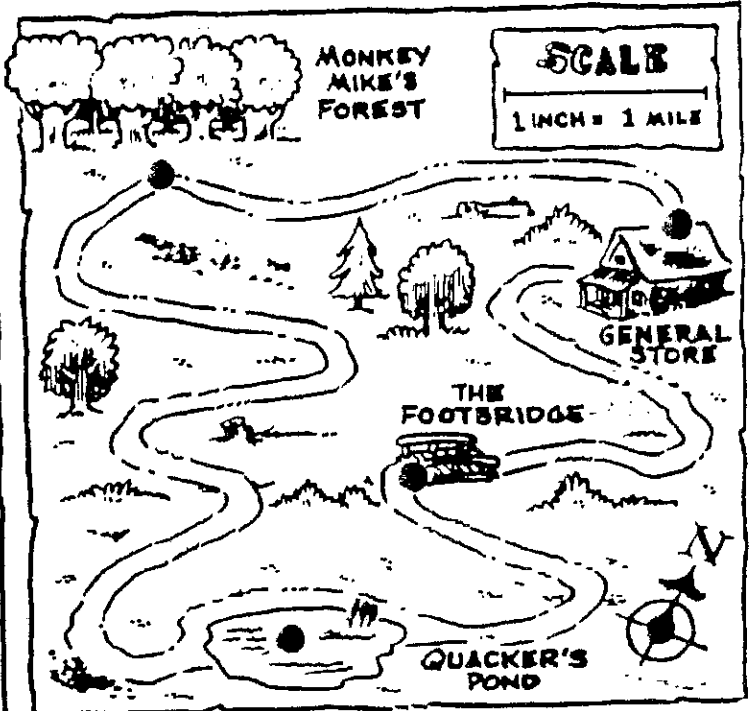


SKILL

Name: _____

Reading Scale:
Curved Distances

BIRDS OF A FEATHER featuring Monkey Mike and Jackrabbit Jim



To measure distances along curved roads, you need to use a string. Place the string along the road. Remove the string, marking the distance with your fingers, and then measure the length with a ruler.

1. Monkey Mike went swimming in Quacker's Pond. How far did he have to scamper from his home to get there?

2. After swimming in Quacker's Pond, Monkey Mike went to the General Store to get something to eat. How far did he scamper on this journey?

3. After eating at the General Store, Monkey Mike went home. But then he remembered that he had forgotten to buy some bananas. He returned to the store, bought the bananas, and returned home. How far did he travel?

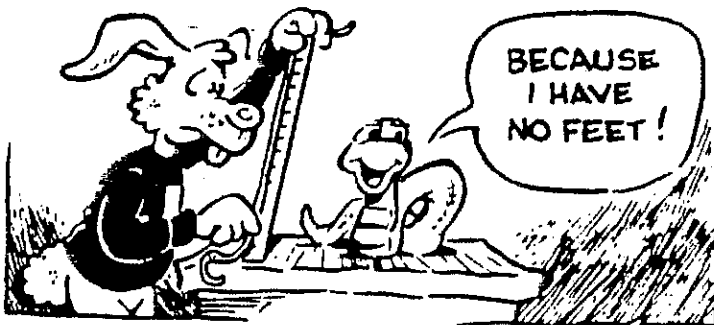
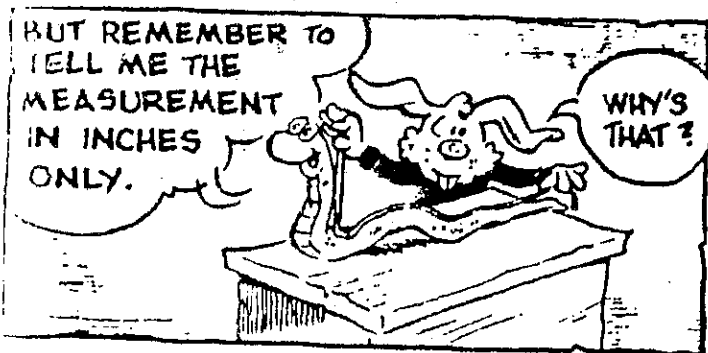
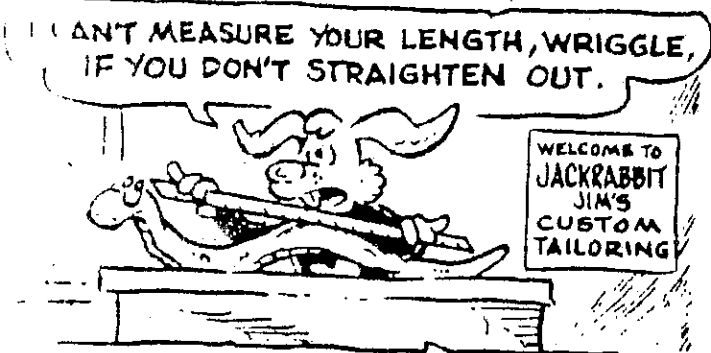
4. Monkey Mike went jogging one morning. He left home, passed Quacker's Pond, scampered over the footbridge, stopped at the General Store for some MonkeyAde, and then went home. How far was his round-trip jog?

5. How much farther would Monkey Mike have to travel if he went to the footbridge by passing Quacker's Pond than by passing the General Store?

6. If Red, the bluejay, flew directly to Quacker's Pond from Monkey Mike's Forest, how far would she travel?

WRAP IT UP! Draw a map with curved roads. Create a scale. Ask a friend to find the distance between two places on your map.

MEASURE FOR MEASURE featuring Jackrabbit Jim and Wriggle the Snake



Use the "Measure for Measure" map to answer the following questions. Place a string along the curved routes and then measure the length of the string with a ruler.

1. When Wriggle shed his scales, he needed to get a new skin at Jackrabbit Jim's Custom Tailoring. He slithered from his woodpile on Poplar St. and went to Jackrabbit Jim's Shop on Main St. How far did he travel?

2. After work, Jackrabbit Jim left his shop, hopping up Main St. to Park Ave., and on to the boat house in Crittertown Park. How far did he hop?

3. Jackrabbit Jim rented a canoe and paddled from the dock at the boat house to Veronica Lake. How far did he paddle?

4. If you took a train from the Elm St. station to the Pine St. station, how far would the ride be?

5. Topsy-Turtle leaves his pond on First St., turns up Oak St., and attends school on Third St. How far is his trip?

6. Samantha Skunk, who teaches at Crittertown School, catches the train at the Pine St. station. She gets off at Oak St. and walks down to the school on Third St. How far is the trip from the Pine St. station to school?

7. Samantha Skunk invited Quacker to her cave for dinner. Quacker flew directly from her pond to Samantha's cave. How far did she fly?

SKILL

Name: _____

.....
Reading Scale:
Curved Distances

MEASURE FOR MEASURE: Crittertown Map

